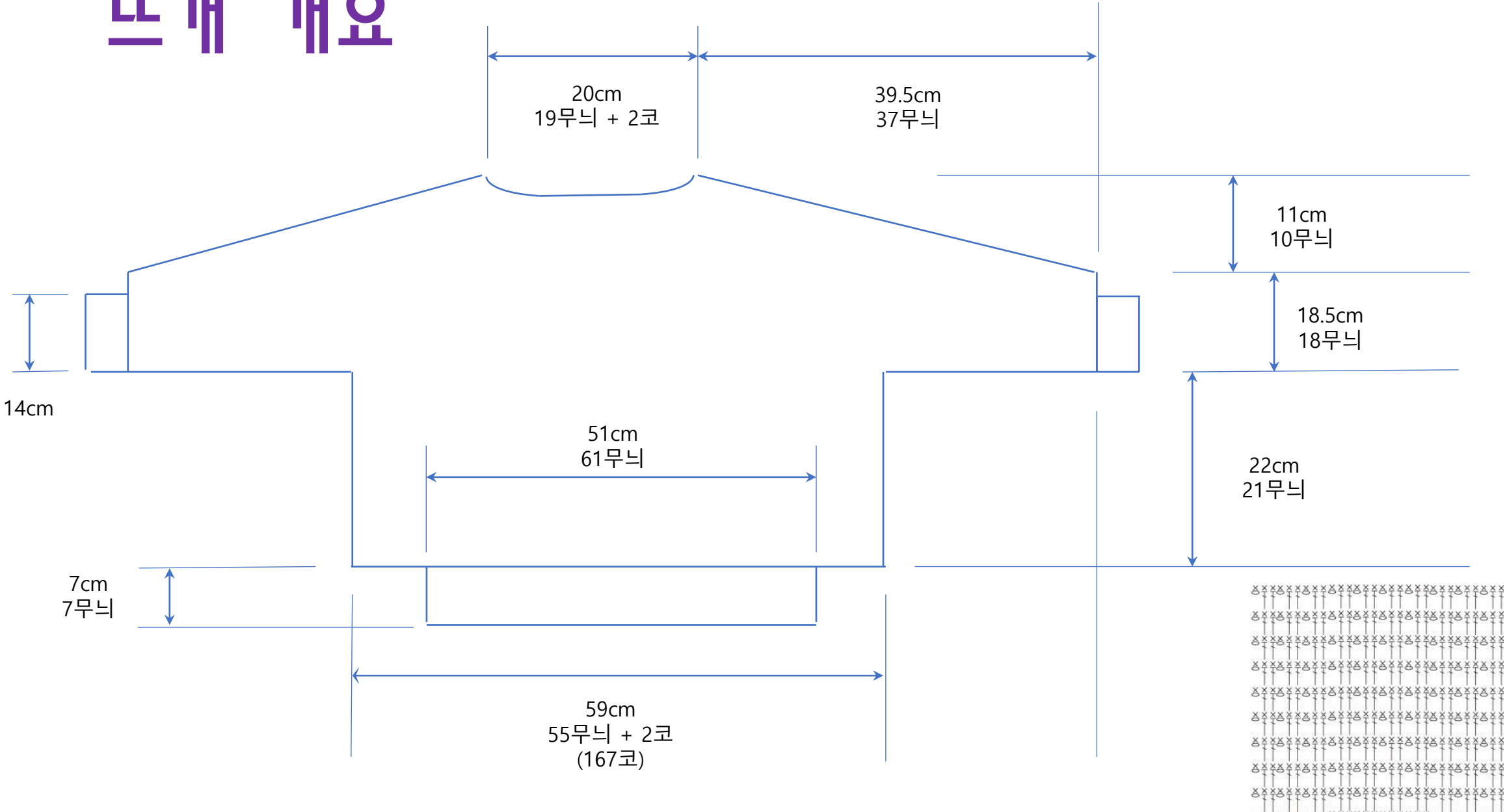
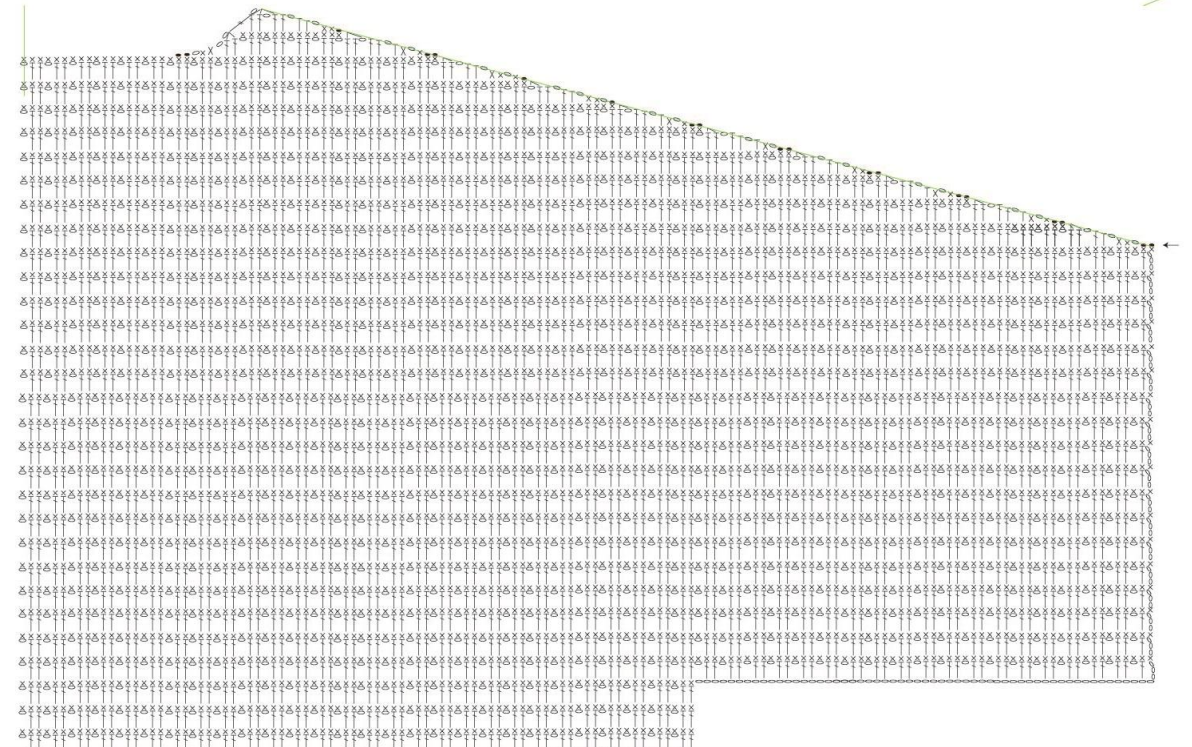
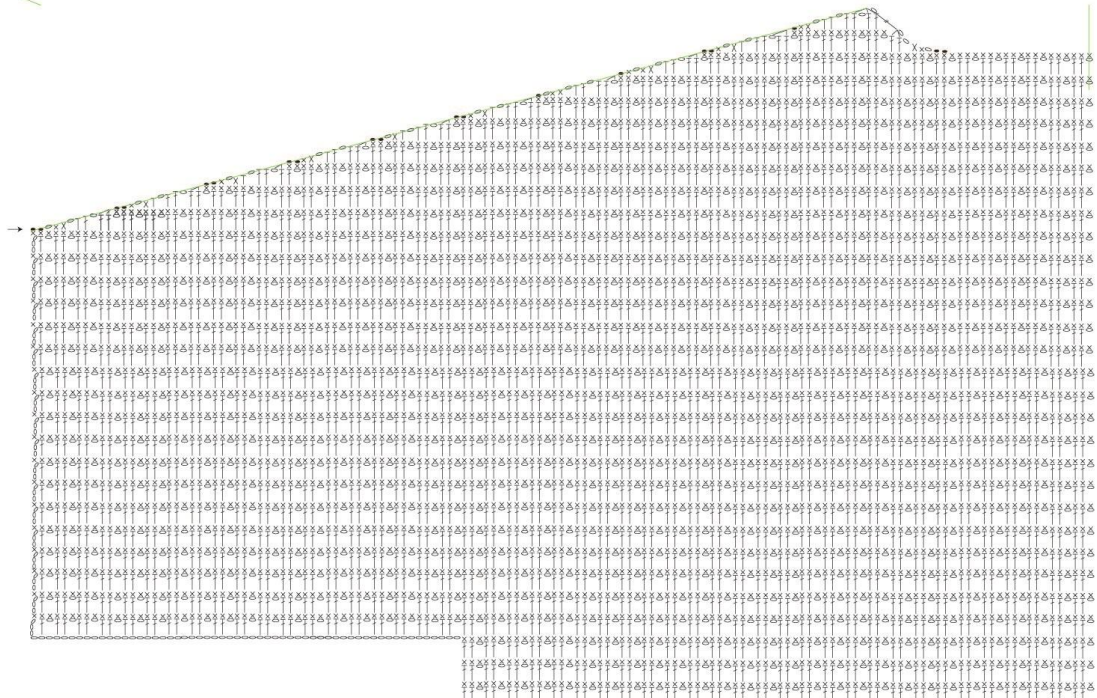
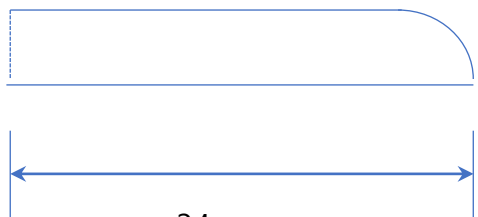


뜨개 개요

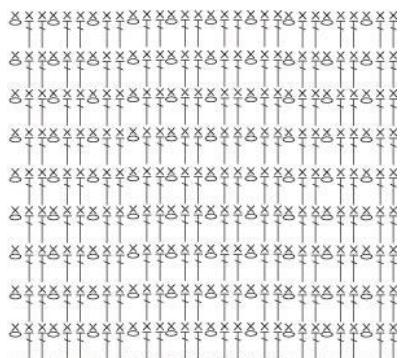




깃



34cm
40무늬



44cm
53무늬

1.5cm
2무늬

앞판

9cm
9무늬 + 2코

39.5cm
37무늬

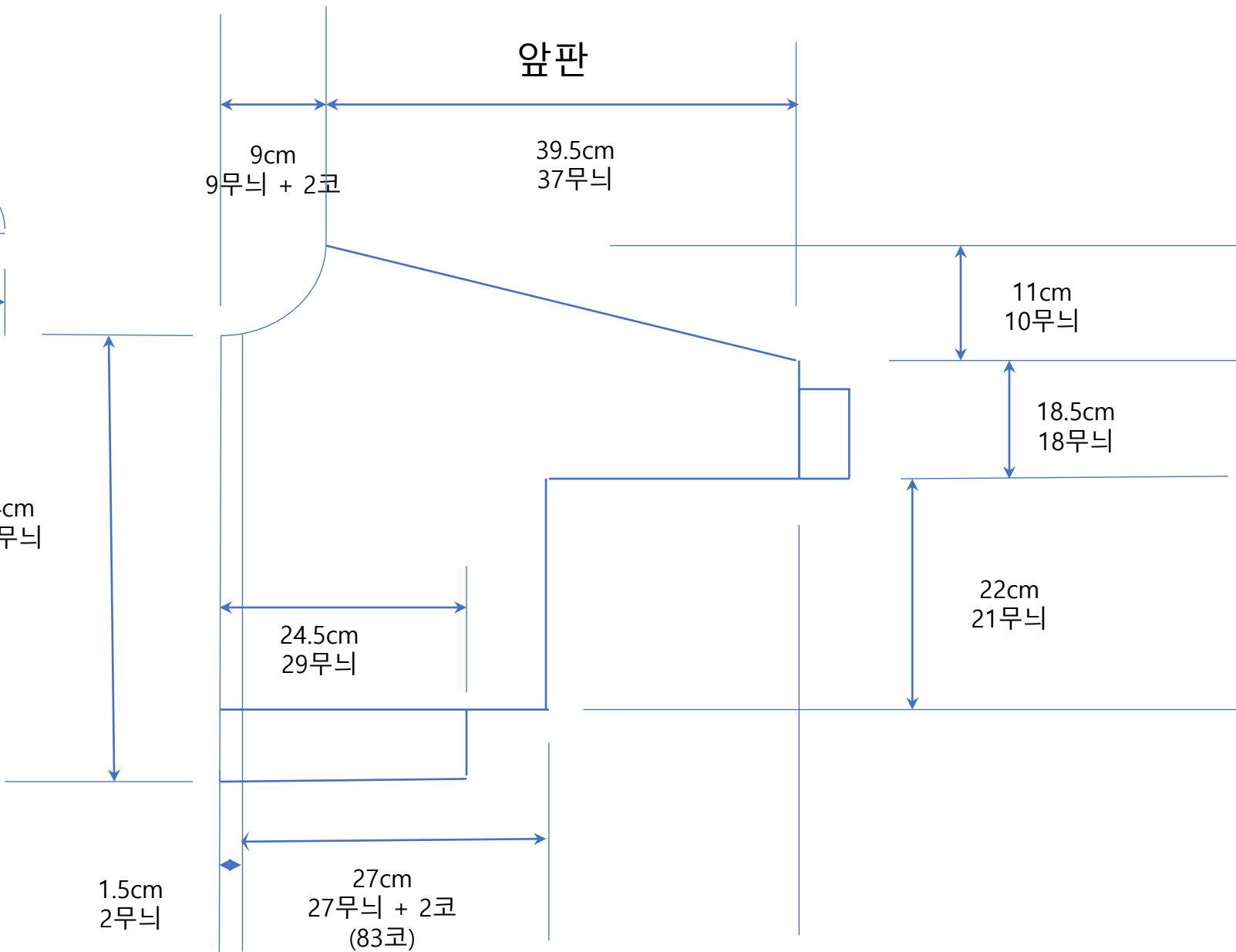
11cm
10무늬

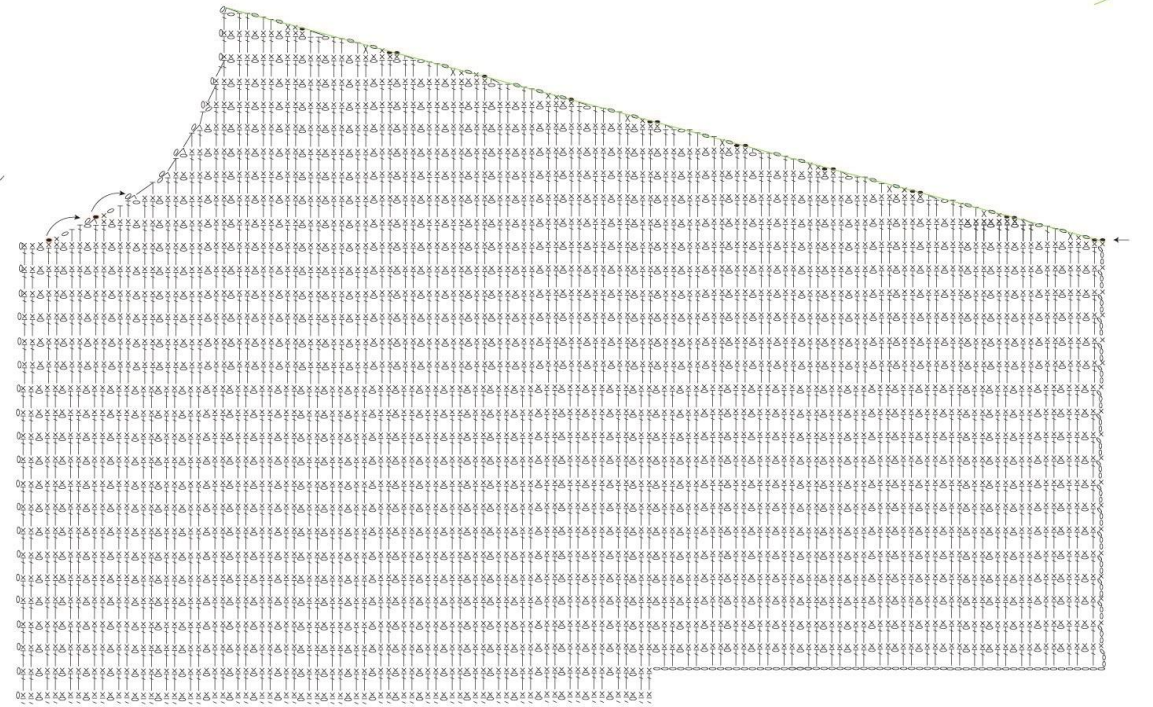
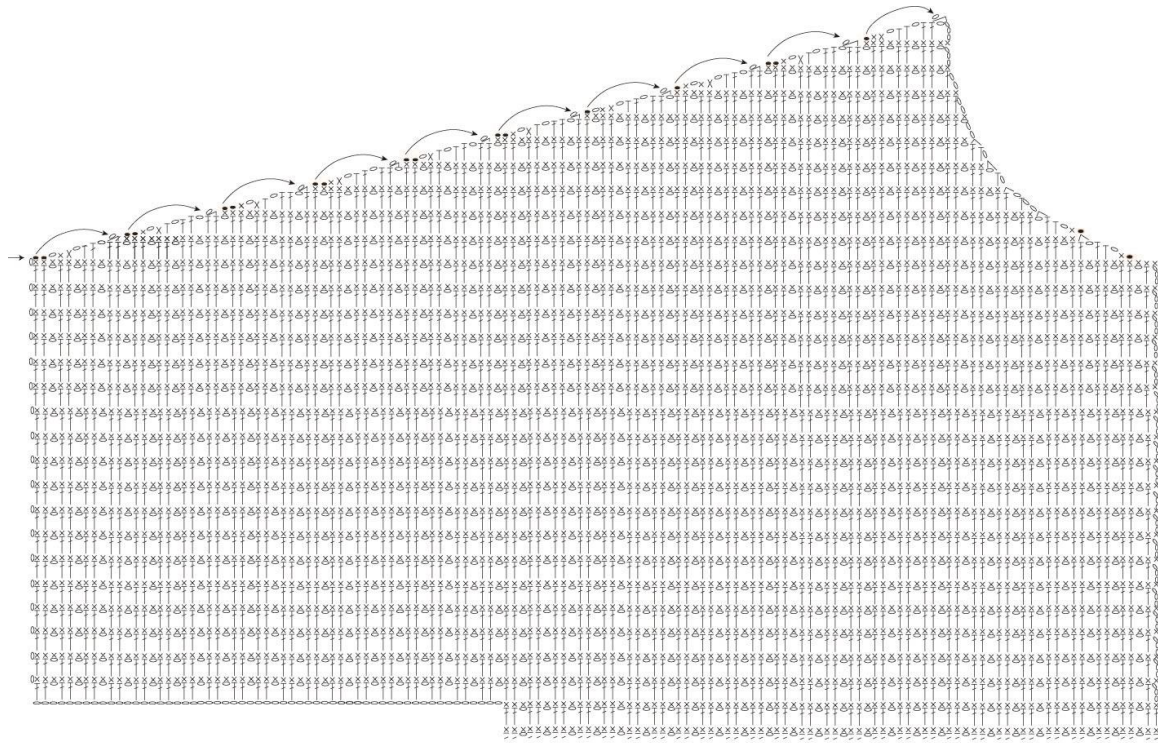
18.5cm
18무늬

22cm
21무늬

24.5cm
29무늬

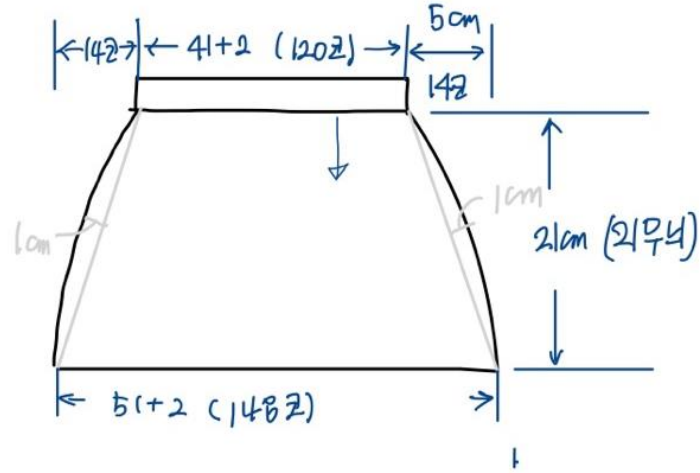
27cm
27무늬 + 2코
(83코)





치마

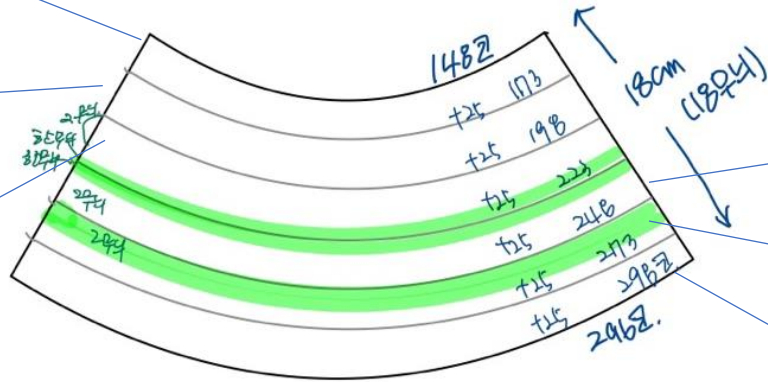
(외모 패턴)
 28칸 x 10무늬
 (100cm x 100cm)



5-1-8
 6-1-17
 6

6-1-9
 7-1-16
 7

7-1-10
 8-1-15
 8



8-1-11
 9-1-14
 9

9-1-12
 10-1-13
 10

10-1-13
 11-1-12
 11

패턴컷. 200%로 증가.
 총 148칸 증가.
 6회 증가.

